

# Does Psi Exist and Can We Prove It?

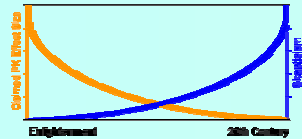
## Belief and Disbelief in Psychokinesis Research



Eckhard Etzold  
 Gesellschaft für Anomalistik - Society for Anomalistics  
 Goslarische Str. 31, 38118 Braunschweig, Germany

### Don't Try to Prove the Existence of Psi!

Some evidence is given for the hypothesis that belief and disbelief in paranormal phenomena create its own evidence in psychokinesis research. Experimenters which believe in psi get better results than others. Skeptics will earn proofs for the null hypothesis. Psychokinesis is acting in the paranormal research as well as in the skeptics attempt to reject any claims of the paranormal. What one has in his mind will generate the corresponding experimental results.



Erosion of Evidence with Increasing Skepticism?

### Psychokinesis Today: Erosion of Evidence

Psychokinesis research is encountering difficulties in replicating its findings. Centuries before psychokinesis phenomena such as levitation or moving objects were well known. Today anomalous phenomena seem to be reduced to rare and weak effects in stochastic processes. While experimental and analysis methods became more and more professional in the last decades, researchers complain about a loss of effect size and evidence.

### Consequences of the MPI: Psi Effects Cannot Be Really Distinguished from Random Results

While experimental and analysis methods became more and more professional in the last decades, researchers complain about a loss of effect size and evidence. The "Model of Pragmatic Information" (MPI) by Walter von Lucadou predicts a change or decline of effect size. According to MPI this is necessary because otherwise a paranormal experiment could be used for information transfer beyond the borders of time and space which might be an intervention paradox. Proof oriented research depends on information transfer too: the information that psi exists has to be transferred via anomalous information carrier. According to MPI not to treat psi as a signal, any information transfer will be impossible. In elaborating further theoretic implications and consequences of the MPI one finally reach a point where the outcome of a given PK experiment can not be distinguished from random results. Therefore, we should abandon proof-oriented research. All we can find are different degrees of evidence.

### If Psychokinesis Exists, the Experimenter Is Always Part of the Experiment

PK effects are the result of interactions between one's mind with the physical world, analysed by an experimenter. In the classical scientific view the experimenter is a neutral observer of the experiment without any influence on the result. This view has to be corrected. The experimenter has also expectations, fears and hopes in his mind which could influence the outcome of a PK experiment. He also belongs, with respect to MPI, to the psi agents of a PK experiment. More than in any other scientific discipline the result of an experiment depends on the experimenters (un)conscious belief or disbelief in paranormal phenomena. Both, belief and disbelief, are self-referential, they act as self-fulfilling prophecies and tend to create their own evidence which confirms the expectations of the paranormal-believing experimenter like the skeptic experimenter.

### Register Belief and Disbelief of Psi Agents and Experimenters

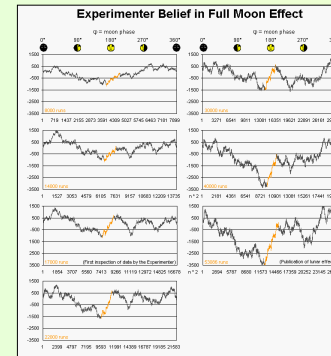
Does increasing skepticism for itself might be the reason for the erosion of evidence? The author's earlier analysis of Fourmilab Retro-PK data with respect to lunar phase yielded a z-value of 3.24 for the full moon interval. A replication yielded a z-value of -2.49 for the same interval. No physical moderator variable was found which could explain the dependencies between PK effect and lunar phase. Some evidence is given that this effect overturn (change of sign) depends not only on the predictions of the MPI but on believing and disbelieving in paranormal phenomena. Other parapsychologists noticed that their experimental results often corresponded to their own belief or disbelief in paranormal phenomena. This seems to be more than just a coincidence or the result of single experiences, it might be part of the nature of psychokinesis phenomena itself.

### Dilemma of PK Research: Belief and Disbelief in Psi Creates Its Own Corresponding Evidence

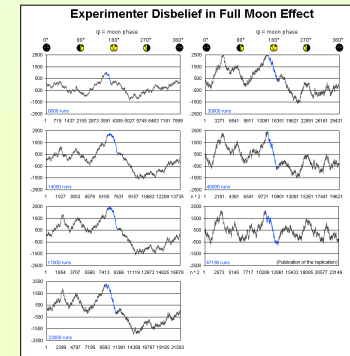
Evaluating appr. 100,000 Experimental data of the Fourmilab RetroPsychokinesis Project for a claimed full moon effect. While believing in a full moon effect, an increasing effect was observed

in the specified interval (orange fragment of the curve). While disbelieving in it, a decreasing effect (blue fragment of the curve) was observed.

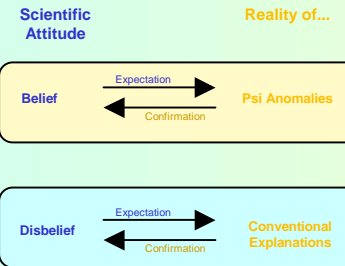
Increasing Full Moon Effect



Decreasing Full Moon Effect



### Expectations are Self-Referential:



17th Century: Joseph of Cupertino Levitating



Wake of the 20th Century: PK Moving Objects



End of the 20th Century: Small MikroPK Effects in Large REG Databases

